

CHETHAM'S SCHOOL OF MUSIC

Manchester, UK



CHETHAM'S SCHOOL OF MUSIC

LOCATION: Manchester, UK

CLIENT: Sir Robert McAlpine

VALUE: £2.2m

Over the past few years, Gariff have completed high-quality joinery works on the Carol Nash Hall, Stoller Hall, Atrium and Ensemble Rooms at Chetham's School of Music, the largest dedicated Music School in the UK. Specialist areas of joinery in the performance halls included the manufacture and installation of solid oak acoustic feature wall panelling systems with sliding mechanism, creation of cantilevered choir & viewing galleries and construction of an MF coved feature ceiling with perimeter illuminated bulkhead detail. In the large atrium area, acoustic fluted dragon-backed panelling was installed with integrated lighting detail and perforated CNC routed acoustic panels were applied to walls.

TYPE: Education

ARCHITECTS: Stephenson Studio

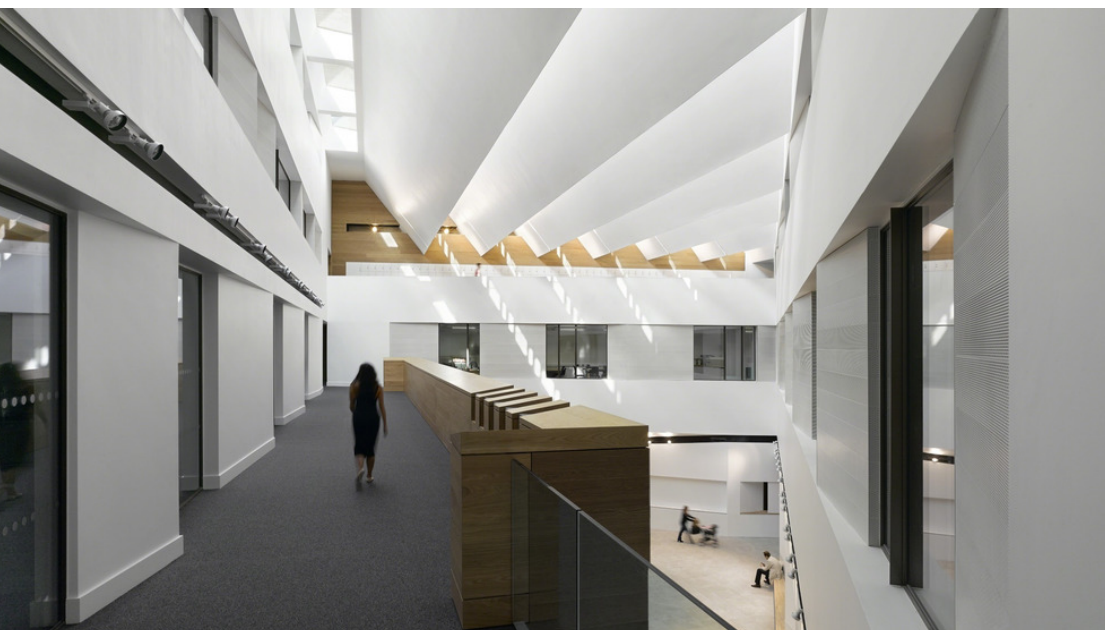
gariff











t: +44 (0)161 848 9983
www.gariff.co.uk
enquiries@gariff.co.uk

Gariff Construction Ltd
Village House
11th Street
Trafford Park
Manchester
M17 1JF