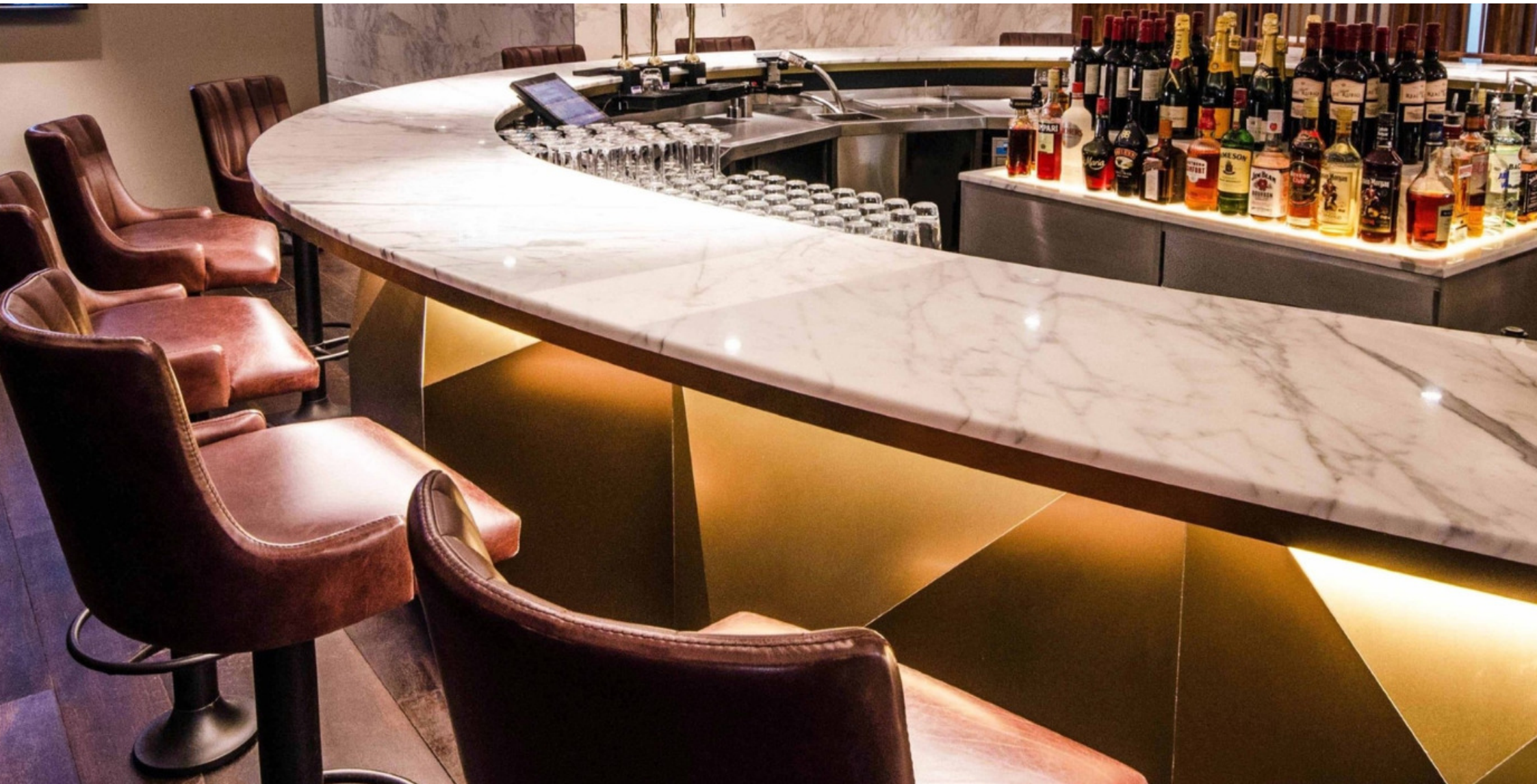


NO1 TRAVELLER LOUNGES

Gatwick Airport, UK



NO1 LOUNGES

LOCATION: London Gatwick Airport, UK

CLIENT: No1 Traveller

VALUE: £1.0m+ per Lounge

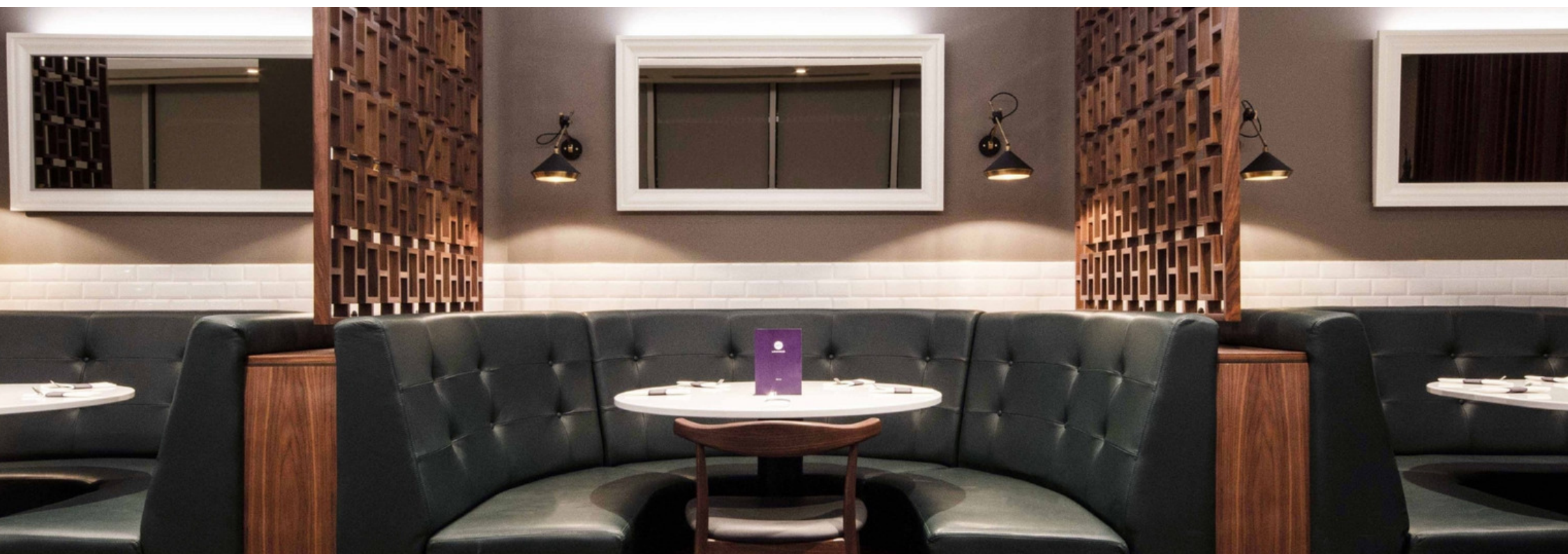
Gariff completed the full fit-out package for two No1 Traveller executive passenger lounges in both the North and South terminals at London's Gatwick airport. Works included bespoke furniture & joinery, complete mechanical & electrical services and all finishes & decoration to walls, floors & ceilings. Two feature marble-topped bars were manufactured in our workshop - one featuring a bronze wrapped faceted facia and the other with walnut veneered angled facia panels. In the bistro area, hardwood walnut lattice design privacy screens were handmade by our experienced craftsmen and then installed surrounding the custom-built curved upholstered booth seating. Other areas completed include a library business centres and luxury sports lounges.

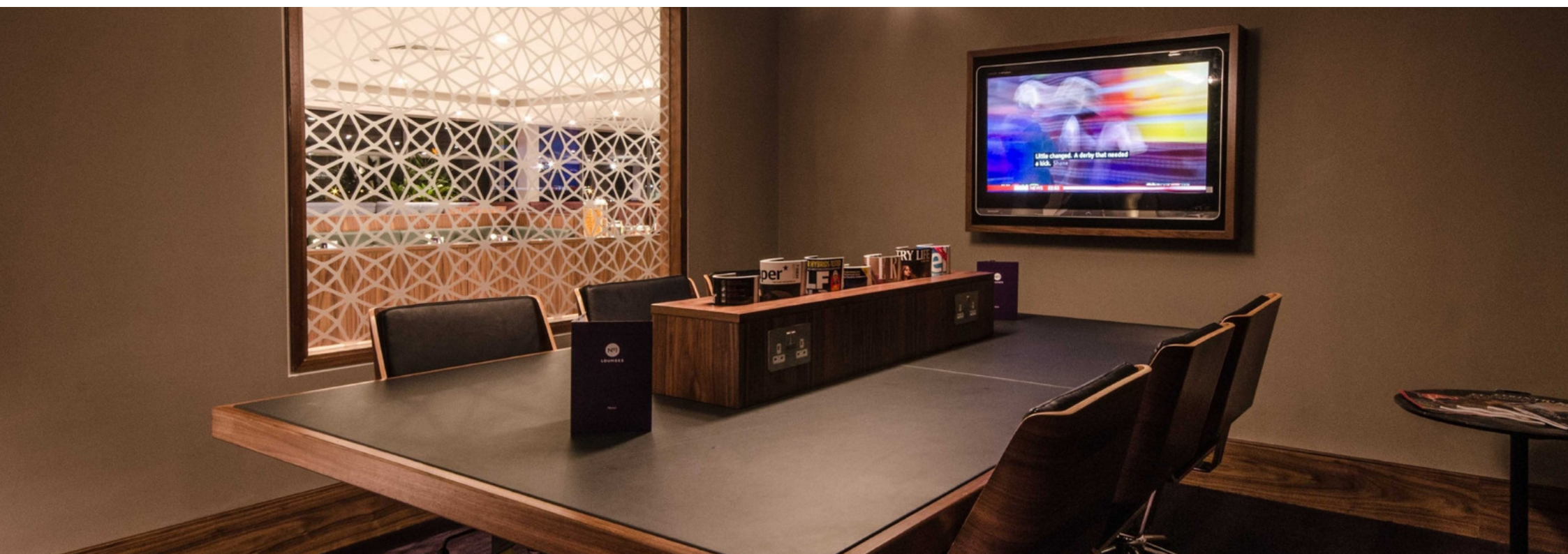
TYPE: Airport

ARCHITECT: Inside Out Architects

gariff













gariff

t: +44 (0)161 848 9983
www.gariff.co.uk
enquiries@gariff.co.uk

Gariff Construction Ltd
Village House
11th Street
Trafford Park
Manchester
M17 1JF